



Village of South Lebanon
10 N. High Street, South Lebanon, Ohio 45065
513-494-2296 fax: 513-494-1656
www.southlebanonohio.org

SOUTH LEBANON BEGINS LEAF COLLECTION SERVICE

The South Lebanon Public Works Department is gearing up for its annual leaf-collection service beginning on October 20, 2021. Since trees lose their leaves at varying times, collection times have been adjusted to accommodate the tree cycles.

To collect leaves more effectively, we request that you rake leaves into the street approximately 12 inches away from the curb to allow rainfall to flow down the curb and into the storm inlets. If your street does not have curbs, line up your row of leaves on the pavement as close to the shoulder of the road as possible to leave the maximum amount of street surface open for vehicles. **DO NOT** park vehicles in the street until leaves have been removed.

Please ensure that there are not any foreign objects hidden in the leaf piles. These objects can cause significant damage to our equipment; thereby causing costly repairs and a delay in the program.

Have your leaves raked and ready for pickup by 7:00 a.m. on the **FIRST** day of your scheduled pickup. When the crews are scheduled to be in your area on consecutive days, they will be on your street only one of those days, but not all. If you live on a street that permits on-street parking, be a good neighbor and only rake your leaves to the street during the first day of your scheduled time for leaf pick-up to avoid creating an obstacle for on street parking until the next scheduled pick-up day.

There may be times when the quantity of leaves in one area is so heavy that the leaf collection crews will begin earlier than scheduled. In these cases, crews will return to your area on the days scheduled as well.

An early snowfall will hamper our leaf collection efforts since some of the same trucks that are used to pick up leaves will be needed for our snow plowing efforts. In case of an early snow prior to a leaf collection; leaves raked to the curb for collection will likely be plowed onto the roadway along with the snow. Weather permitting, any remaining leaves will be collected.

Should you miss the opportunity to participate in the program on the scheduled dates, please bag your leaves and place them at the curb with your weekly trash for pick-up.

If you have any questions or comments, you can contact the Village at (513) 494-2296 or by email at jhaddix@southlebanonohio.org.

2021

Village of South Lebanon Leaf Collection Schedule

AREA 1: - Oct.20-22, Nov. 13-15, Dec. 8-10,

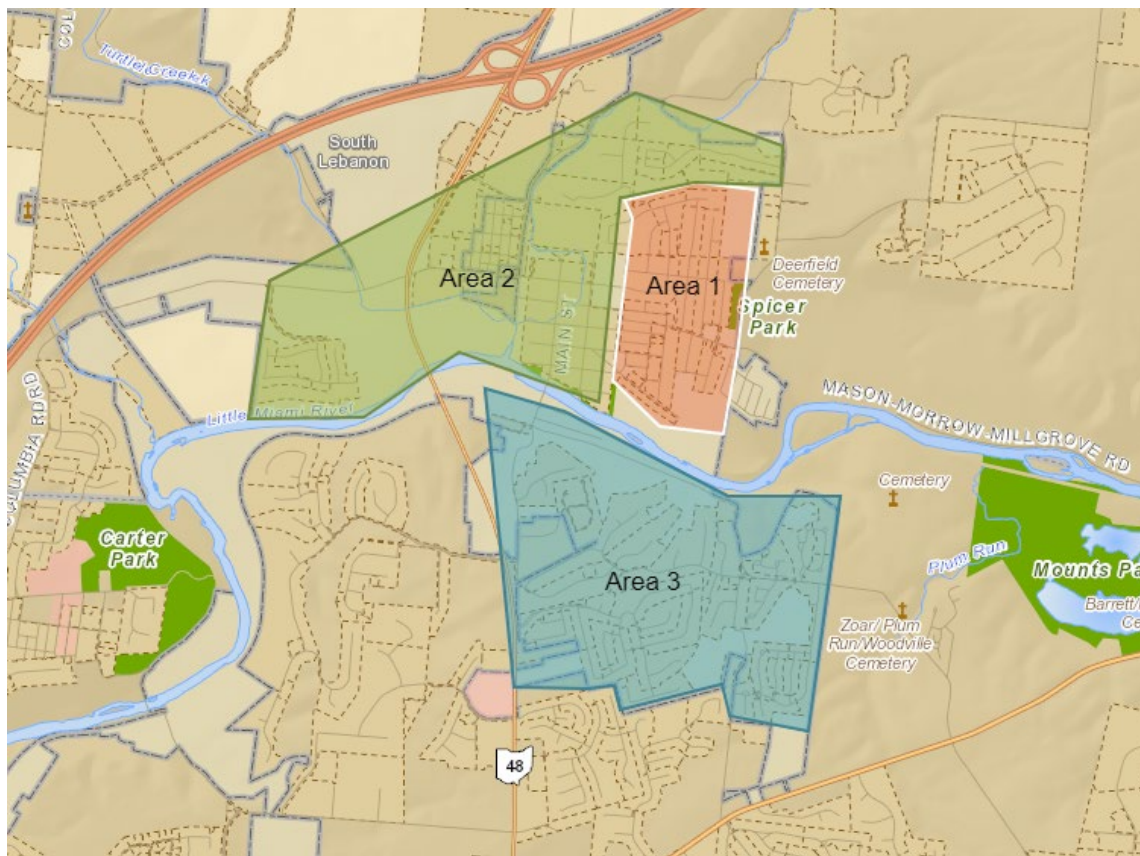
Area east of Section Street and south of Mary Lane Extension extending south to the river

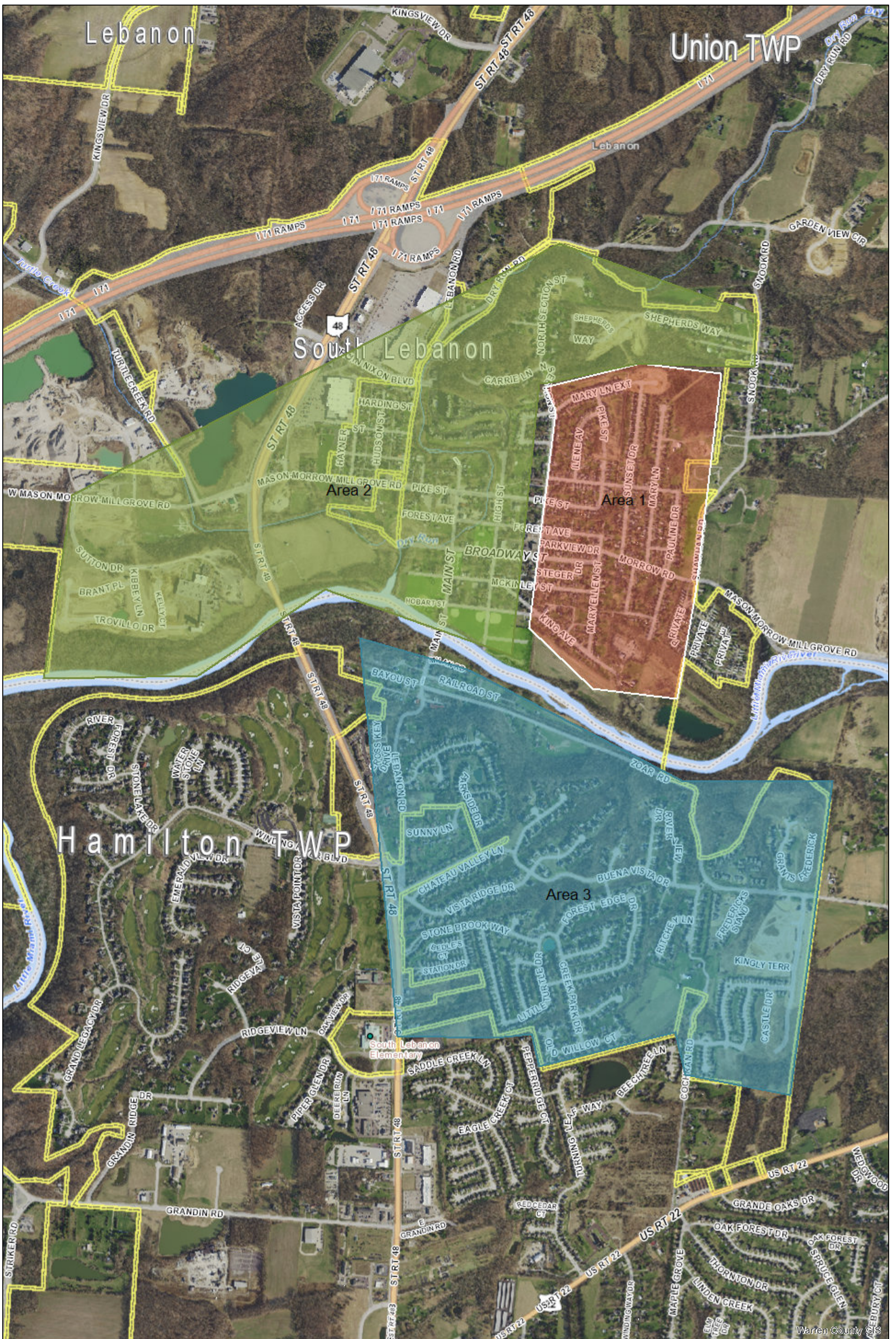
AREA 2 – Oct. 25-27, Nov. 15-17, Dec. 13-15

Area west of Section St. & north of Mary Lane Extension extending north and west to the Village boundaries

AREA 3 – Oct. 27-29, Nov. 17-19, Dec. 15-17

Area south of the river extending from State Route 48 west to the Village boundary





Date: 9/15/2020

| | | | |
|------------------------|------------------------|------------------------|-------------------------|
| Cadastral Lines | Corporate Line | Parcel Line | Hardware |
| - All other values | County Line | ROW Unknown Width Line | Subdivision Lot Line |
| Line Type | Farm Lot Line | Road ROW | Township and Range Line |
| - Auditors Tract Line | Overpass Line | School Line | Tract Line |
| Civil Township Line | Subdivision Limit Line | Section Line | VMS Line |
| | | | Vacated Road Line |

South Lebanon Leaf Collection Map

1 inch = 1,200 feet

The provider makes no warranty or representation with respect to its information, its quality or suitability for a particular purpose. This information is provided AS IS, and the requester assumes the entire risk as to its quality and suitability. The provider will not be liable for direct, indirect, incidental, or consequential damages resulting from any defect in the information. The provider shall have no liability for any other information, programs or data used with or combined with the requested information, including the cost of recovering information, programs or data.

Warren County GIS