

**VILLAGE OF SOUTH LEBANON, OHIO
RESOLUTION NO. 2019-11**

**A RESOLUTION APPROVING AND AUTHORIZING THE MAYOR AND FISCAL
OFFICER TO EXECUTE A PLAT FOR SHEPHERD'S CROSSING SECTION 4
SUBDIVISION, AND DECLARING AN EMERGENCY**

WHEREAS, the Village Planning Commission met on February 28, 2019, and approved the final plat for the Shepherd's Crossing Section 4 Subdivision; and,

WHEREAS, the developer has met the conditions required by the Planning Commission; and,

WHEREAS, immediate action is required to preserve the Village's authority to review and approve said subdivision plat, and such action is necessary in order to preserve the public peace, health, safety or welfare of the Village.

NOW, THEREFORE, BE IT RESOLVED by the Council of the Village of South Lebanon, Ohio, at least two-thirds of all members elected thereto concurring:

Section 1. That the Council approves and authorizes the Mayor and Fiscal Officer to execute the Shepherd's Crossing Section 4 Subdivision Plat, a copy of which is attached hereto.

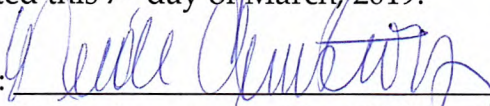
Section 2. That the recitals contained within the Whereas Clauses set forth above are incorporated by reference herein.

Section 3. That this Resolution is hereby declared to be an emergency measure in accordance with Ohio Rev. Code § 731.30 for the immediate preservation of the public peace, health, safety and general welfare; and, this Resolution shall be in full force and effective immediately upon its passage.

Section 4. That it is found and determined that all formal actions of the Council concerning and relating to the adoption of this Resolution were adopted in an open meeting of Council in compliance with all legal requirements, including Section 121.22 of the Ohio Revised Code.

Adopted this 7th day of March, 2019.

Attest:


Nicole Armstrong, Fiscal Officer


James D. Smith, Mayor

Rules Suspended: / /2019 (if applicable)

Effective Date – / /2019

Vote - 6 Yeas
 ___ Nays

First Reading – / /2019

Effective Date – / /2019

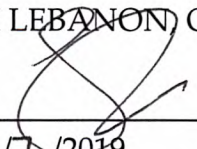
Second Reading – / /2019

Third Reading– / /2019

Vote - ___ Yeas
 ___ Nays

Prepared by and approved as to form:

PAUL R. REVELSON
VILLAGE SOLICITOR
SOUTH LEBANON, OHIO

By:  _____

Date: 3/7 /2019

SEC 32 – TOWN 5 – RANGE 3
UNION TOWNSHIP
VILLAGE OF SOUTH LEBANON
WARREN COUNTY, OHIO
FEBRUARY, 2019

THESE DRAWINGS ARE THE PROPERTY OF MCCARTY ASSOCIATES, LLC AND SHALL NOT BE USED OR REPRODUCED WITHOUT WRITTEN CONSENT OF MCCARTY ASSOCIATES, LLC.

© 2019 MCCARTY ASSOCIATES, LLC

DRAWN: DWS CHECKED: LMP

McCarthy Associates, LLC
Architects—Engineers—Surveyors

1115 N. HIGH ST., HILLTOP, OHIO 45131 P: (614) 353-0901 F: (614) 393-2480
1515 E. 25TH ST., 25TH FLOOR, CLEVELAND, OHIO 44115 P: (216) 512-7200 F: (216) 512-7500
104 E. MARKET ST., WASHINGTON CT., OHIO 45150 P: (614) 353-3516 F: (614) 393-5828
www.mccartyassociates.com

4 SHEPHERDS CROSSING SECTION	SEC 32, TOWN 5, RANGE 3	UNION TOWNSHIP	VILLAGE OF SOUTH LEBANON	WARREN COUNTY, OHIO	SCALE	AS NOTED	FEBRUARY, 2019
------------------------------	-------------------------	----------------	--------------------------	---------------------	-------	----------	----------------

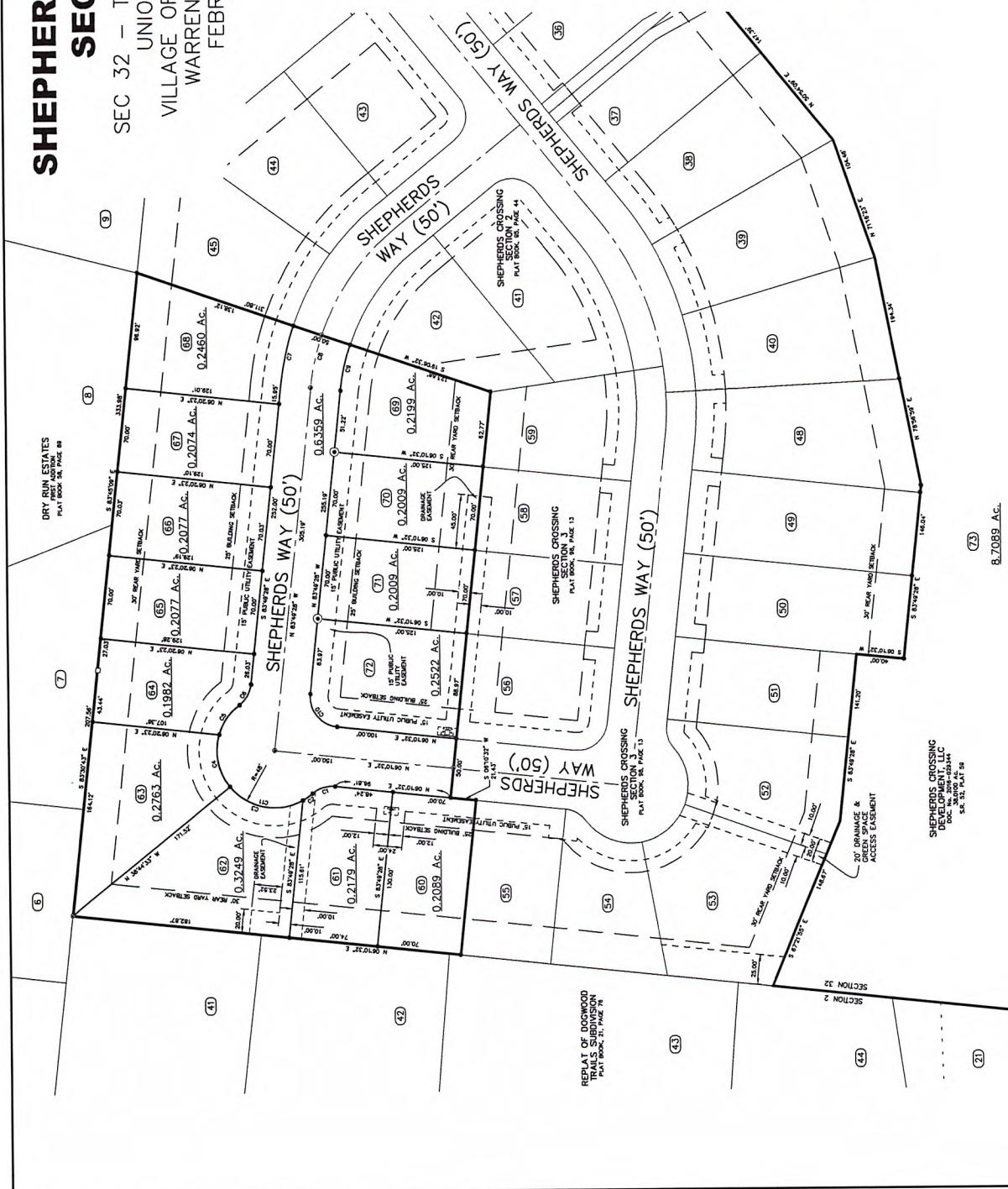
	DRAWING NUMBER	SHEET
E12-541B		2/3

SOURCE No.	SOURCE VALUE			
	LENGTH	RAZURE	DELTA	CHORD BEARING
C1	20.41	25.02	49°00'N	18.82
C2	9.99	46.02	115°28'E	8.87
C3	68.88	46.02	79°30'W	5.81
C4	46.48	46.02	357°24'E	44.62
C5	50.33	46.02	367°14'E	29.87
C6	50.41	25.02	127°00'E	50.75
C7	25.01	223.02	127°00'E	50.75
C8	45.22	290.27	127°13'E	45.12
C9	38.58	175.50	127°13'E	38.48
C10	38.37	26.02	177°00'E	38.48
C11	153.76	46.02	183°22'W	55.95
C12	153.76	46.02	183°22'W	55.95
C13	177.24	25.02	177°00'E	177.24
C14	5.11	25.02	177°00'E	5.11
C15	78.90	25.02	177°00'E	78.90
C16	8.07	25.02	177°00'E	8.07
C17	5.11	25.02	177°00'E	5.11
C18	5.11	25.02	177°00'E	5.11
C19	5.11	25.02	177°00'E	5.11
C20	5.11	25.02	177°00'E	5.11
C21	5.11	25.02	177°00'E	5.11
C22	5.11	25.02	177°00'E	5.11
C23	5.11	25.02	177°00'E	5.11
C24	5.11	25.02	177°00'E	5.11
C25	5.11	25.02	177°00'E	5.11
C26	5.11	25.02	177°00'E	5.11
C27	5.11	25.02	177°00'E	5.11
C28	5.11	25.02	177°00'E	5.11
C29	5.11	25.02	177°00'E	5.11
C30	5.11	25.02	177°00'E	5.11
C31	5.11	25.02	177°00'E	5.11
C32	5.11	25.02	177°00'E	5.11
C33	5.11	25.02	177°00'E	5.11
C34	5.11	25.02	177°00'E	5.11
C35	5.11	25.02	177°00'E	5.11
C36	5.11	25.02	177°00'E	5.11
C37	5.11	25.02	177°00'E	5.11
C38	5.11	25.02	177°00'E	5.11
C39	5.11	25.02	177°00'E	5.11
C40	5.11	25.02	177°00'E	5.11
C41	5.11	25.02	177°00'E	5.11
C42	5.11	25.02	177°00'E	5.11
C43	5.11	25.02	177°00'E	5.11
C44	5.11	25.02	177°00'E	5.11
C45	5.11	25.02	177°00'E	5.11
C46	5.11	25.02	177°00'E	5.11
C47	5.11	25.02	177°00'E	5.11
C48	5.11	25.02	177°00'E	5.11
C49	5.11	25.02	177°00'E	5.11
C50	5.11	25.02	177°00'E	5.11
C51	5.11	25.02	177°00'E	5.11
C52	5.11	25.02	177°00'E	5.11
C53	5.11	25.02	177°00'E	5.11
C54	5.11	25.02	177°00'E	5.11
C55	5.11	25.02	177°00'E	5.11
C56	5.11	25.02	177°00'E	5.11
C57	5.11	25.02	177°00'E	5.11
C58	5.11	25.02	177°00'E	5.11
C59	5.11	25.02	177°00'E	5.11
C60	5.11	25.02	177°00'E	5.11
C61	5.11	25.02	177°00'E	5.11
C62	5.11	25.02	177°00'E	5.11
C63	5.11	25.02	177°00'E	5.11
C64	5.11	25.02	177°00'E	5.11
C65	5.11	25.02	177°00'E	5.11
C66	5.11	25.02	177°00'E	5.11
C67	5.11	25.02	177°00'E	5.11
C68	5.11	25.02	177°00'E	5.11
C69	5.11	25.02	177°00'E	5.11
C70	5.11	25.02	177°00'E	5.11
C71	5.11	25.02	177°00'E	5.11
C72	5.11	25.02	177°00'E	5.11
C73	5.11	25.02	177°00'E	5.11
C74	5.11	25.02	177°00'E	5.11
C75	5.11	25.02	177°00'E	5.11
C76	5.11	25.02	177°00'E	5.11
C77	5.11	25.02	177°00'E	5.11
C78	5.11	25.02	177°00'E	5.11
C79	5.11	25.02	177°00'E	5.11
C80	5.11	25.02	177°00'E	5.11
C81	5.11	25.02	177°00'E	5.11
C82	5.11	25.02	177°00'E	5.11
C83	5.11	25.02	177°00'E	5.11
C84	5.11	25.02	177°00'E	5.11
C85	5.11	25.02	177°00'E	5.11
C86	5.11	25.02	177°00'E	5.11
C87	5.11	25.02	177°00'E	5.11
C88	5.11	25.02	177°00'E	5.11
C89	5.11	25.02	177°00'E	5.11
C90	5.11	25.02	177°00'E	5.11
C91	5.11	25.02	177°00'E	5.11
C92	5.11	25.02	177°00'E	5.11
C93	5.11	25.02	177°00'E	5.11
C94	5.11	25.02	177°00'E	5.11
C95	5.11	25.02	177°00'E	5.11
C96	5.11	25.02	177°00'E	5.11
C97	5.11	25.02	177°00'E	5.11
C98	5.11	25.02	177°00'E	5.11
C99	5.11	25.02	177°00'E	5.11
C100	5.11	25.02	177°00'E	5.11

NOTES:

LEGEND

- 5/8" IRON PIN (SET) WITH PLASTIC CAP
STAMPED "MCARTY ASSOCIATES"
- 1" IRON PIN (SET)
- MAG NAIL (SET)
- 1/2" IRON PIN (FOUND)
- STONE (FOUND)



SCALE 1"=40'

SEC 32 – TOWN 5 – RANGE 3
UNION TOWNSHIP
VILLAGE OF SOUTH LEBANON
WARREN COUNTY, OHIO
FEBRUARY, 2019

