

**CITY OF SOUTH LEBANON, OHIO
RESOLUTION NO. 2021-48**

**A RESOLUTION APPROVING AND AUTHORIZING THE MAYOR AND FISCAL
OFFICER TO EXECUTE A RECORD PLAT FOR AUBURN GROVE SUBDIVISION,
AND DECLARING AN EMERGENCY**

WHEREAS, the South Lebanon Planning Commission met on October 6, 2021, and conditionally approved the final plat for the Auburn Grove Subdivision; and,

WHEREAS, the developer has met the conditions required by the Planning Commission; and,

WHEREAS, immediate action is required to preserve the City's authority to review and approve said subdivision record plat, and such action is necessary in order to preserve the public peace, health, safety or welfare of the Village.

NOW, THEREFORE, BE IT RESOLVED by the Council of the Village of South Lebanon, Ohio, at least two-thirds of all members elected thereto concurring:

Section 1. That the Council approves and authorizes the Mayor and Fiscal Officer to execute the Auburn Grove Subdivision Record Plat, a copy of which is attached hereto.

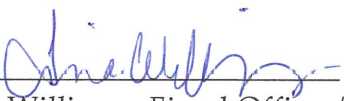
Section 2. That the recitals contained within the Whereas Clauses set forth above are incorporated by reference herein.

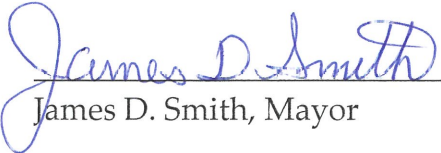
Section 3. That this Resolution is hereby declared to be an emergency measure in accordance with Ohio Rev. Code § 731.30 for the immediate preservation of the public peace, health, safety and general welfare; and, this Resolution shall be in full force and effective immediately upon its passage.

Section 4. That it is found and determined that all formal actions of the Council concerning and relating to the adoption of this Resolution were adopted in an open meeting of Council in compliance with all legal requirements, including Section 121.22 of the Ohio Revised Code.

Resolution No. 2021-48
Page 2

Adopted this 21st day of October, 2021.

Attest: 
Petrina D. Williams, Fiscal Officer/Clerk


James D. Smith, Mayor

Rules Suspended: 10/21/2021 (if applicable)

Effective Date – / /2021

Vote - 6 Yeas
 Nays


First Reading – / /2021
Second Reading – / /2021
Third Reading – / /2021

Effective Date – / /2021

Vote - Yeas
 Nays

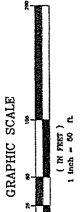
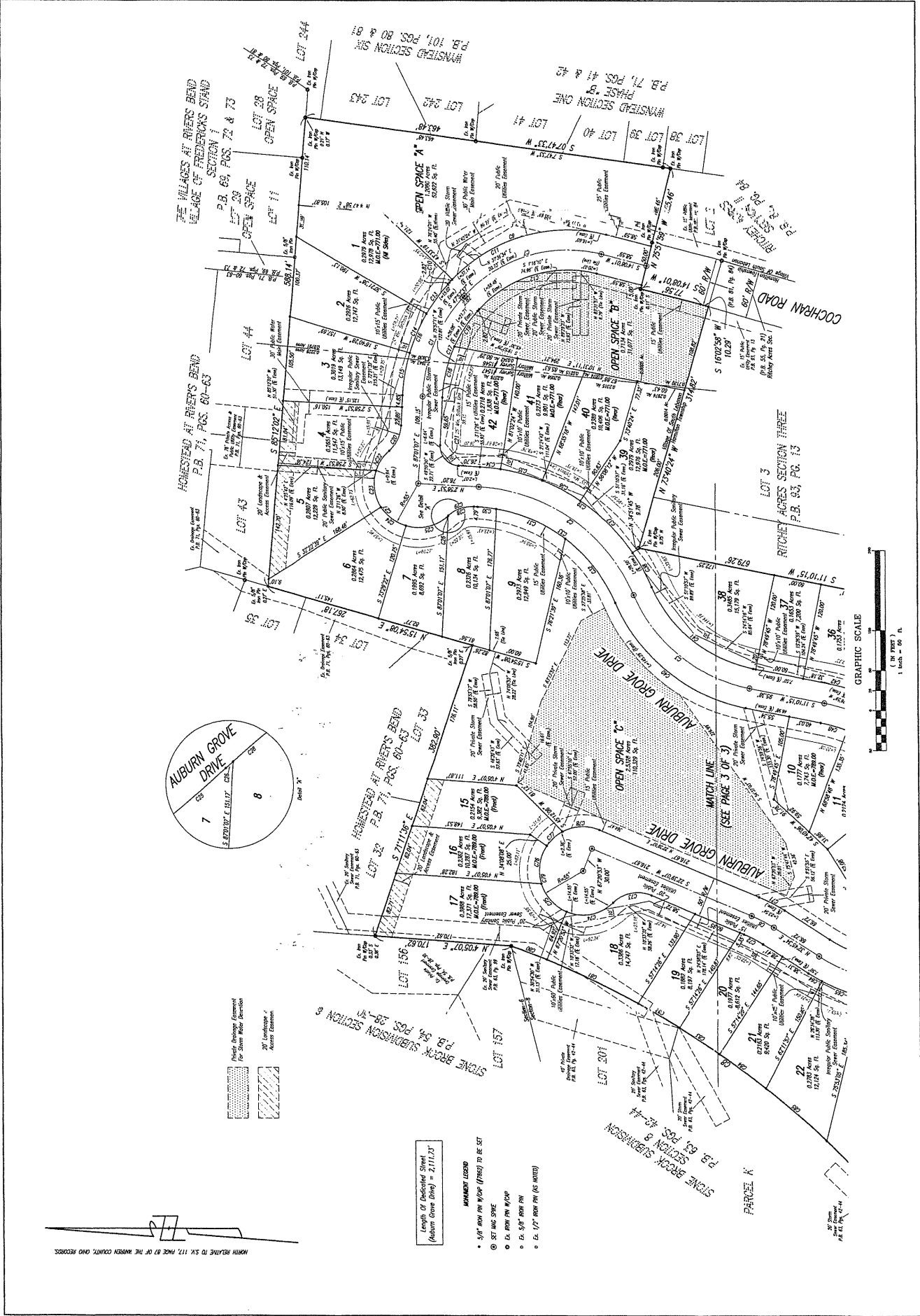
Prepared by and approved as to form:

ANDREW P. MEIER
SOLICITOR
SOUTH LEBANON, OHIO

By: 
Date: 10/21/2021

DATE	6-3-21
BY	G.R.
CHKD	D.P.
SCALE	1" = 50'

AUBURN GROVE

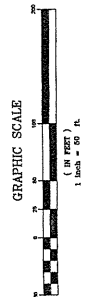
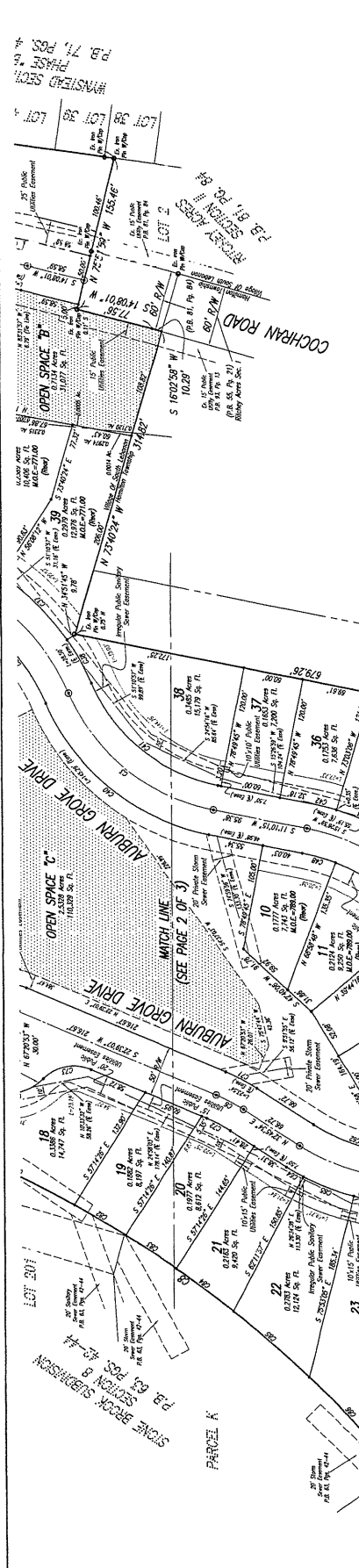


- LEGEND**
- Length of Designated Street (Auburn Grove Drive) = 2117.23'
 - MANHOLE LEGEND
 - 36" ROW PAV W/CHP (Paved to be set)
 - SET AND SINK
 - 24" ROW PAV W/CHP
 - 36" ROW PAV
 - 48" ROW PAV (AS NOTED)

NORTH RELATIVE TO SK 117, PAGE 87 OF THE WARREN COUNTY, OHIO RECORDS.

CURVE	BEARING	AREA	ARC LENGTH	CHORD	BEARING
C-1	S 89° 17' 30" W	250.00	156.34	156.34	S 89° 17' 30" W
C-2	S 89° 17' 30" W	250.00	156.34	156.34	S 89° 17' 30" W
C-3	S 89° 17' 30" W	250.00	156.34	156.34	S 89° 17' 30" W
C-4	S 89° 17' 30" W	250.00	156.34	156.34	S 89° 17' 30" W
C-5	S 89° 17' 30" W	250.00	156.34	156.34	S 89° 17' 30" W
C-6	S 89° 17' 30" W	250.00	156.34	156.34	S 89° 17' 30" W
C-7	S 89° 17' 30" W	250.00	156.34	156.34	S 89° 17' 30" W
C-8	S 89° 17' 30" W	250.00	156.34	156.34	S 89° 17' 30" W
C-9	S 89° 17' 30" W	250.00	156.34	156.34	S 89° 17' 30" W
C-10	S 89° 17' 30" W	250.00	156.34	156.34	S 89° 17' 30" W
C-11	S 89° 17' 30" W	250.00	156.34	156.34	S 89° 17' 30" W
C-12	S 89° 17' 30" W	250.00	156.34	156.34	S 89° 17' 30" W
C-13	S 89° 17' 30" W	250.00	156.34	156.34	S 89° 17' 30" W
C-14	S 89° 17' 30" W	250.00	156.34	156.34	S 89° 17' 30" W
C-15	S 89° 17' 30" W	250.00	156.34	156.34	S 89° 17' 30" W
C-16	S 89° 17' 30" W	250.00	156.34	156.34	S 89° 17' 30" W
C-17	S 89° 17' 30" W	250.00	156.34	156.34	S 89° 17' 30" W
C-18	S 89° 17' 30" W	250.00	156.34	156.34	S 89° 17' 30" W
C-19	S 89° 17' 30" W	250.00	156.34	156.34	S 89° 17' 30" W
C-20	S 89° 17' 30" W	250.00	156.34	156.34	S 89° 17' 30" W
C-21	S 89° 17' 30" W	250.00	156.34	156.34	S 89° 17' 30" W
C-22	S 89° 17' 30" W	250.00	156.34	156.34	S 89° 17' 30" W
C-23	S 89° 17' 30" W	250.00	156.34	156.34	S 89° 17' 30" W
C-24	S 89° 17' 30" W	250.00	156.34	156.34	S 89° 17' 30" W
C-25	S 89° 17' 30" W	250.00	156.34	156.34	S 89° 17' 30" W
C-26	S 89° 17' 30" W	250.00	156.34	156.34	S 89° 17' 30" W
C-27	S 89° 17' 30" W	250.00	156.34	156.34	S 89° 17' 30" W
C-28	S 89° 17' 30" W	250.00	156.34	156.34	S 89° 17' 30" W
C-29	S 89° 17' 30" W	250.00	156.34	156.34	S 89° 17' 30" W
C-30	S 89° 17' 30" W	250.00	156.34	156.34	S 89° 17' 30" W
C-31	S 89° 17' 30" W	250.00	156.34	156.34	S 89° 17' 30" W
C-32	S 89° 17' 30" W	250.00	156.34	156.34	S 89° 17' 30" W
C-33	S 89° 17' 30" W	250.00	156.34	156.34	S 89° 17' 30" W
C-34	S 89° 17' 30" W	250.00	156.34	156.34	S 89° 17' 30" W
C-35	S 89° 17' 30" W	250.00	156.34	156.34	S 89° 17' 30" W
C-36	S 89° 17' 30" W	250.00	156.34	156.34	S 89° 17' 30" W
C-37	S 89° 17' 30" W	250.00	156.34	156.34	S 89° 17' 30" W
C-38	S 89° 17' 30" W	250.00	156.34	156.34	S 89° 17' 30" W
C-39	S 89° 17' 30" W	250.00	156.34	156.34	S 89° 17' 30" W
C-40	S 89° 17' 30" W	250.00	156.34	156.34	S 89° 17' 30" W
C-41	S 89° 17' 30" W	250.00	156.34	156.34	S 89° 17' 30" W
C-42	S 89° 17' 30" W	250.00	156.34	156.34	S 89° 17' 30" W
C-43	S 89° 17' 30" W	250.00	156.34	156.34	S 89° 17' 30" W
C-44	S 89° 17' 30" W	250.00	156.34	156.34	S 89° 17' 30" W
C-45	S 89° 17' 30" W	250.00	156.34	156.34	S 89° 17' 30" W
C-46	S 89° 17' 30" W	250.00	156.34	156.34	S 89° 17' 30" W
C-47	S 89° 17' 30" W	250.00	156.34	156.34	S 89° 17' 30" W
C-48	S 89° 17' 30" W	250.00	156.34	156.34	S 89° 17' 30" W
C-49	S 89° 17' 30" W	250.00	156.34	156.34	S 89° 17' 30" W
C-50	S 89° 17' 30" W	250.00	156.34	156.34	S 89° 17' 30" W

CURVE	BEARING	AREA	ARC LENGTH	CHORD	BEARING
C-1	S 89° 17' 30" W	250.00	156.34	156.34	S 89° 17' 30" W
C-2	S 89° 17' 30" W	250.00	156.34	156.34	S 89° 17' 30" W
C-3	S 89° 17' 30" W	250.00	156.34	156.34	S 89° 17' 30" W
C-4	S 89° 17' 30" W	250.00	156.34	156.34	S 89° 17' 30" W
C-5	S 89° 17' 30" W	250.00	156.34	156.34	S 89° 17' 30" W
C-6	S 89° 17' 30" W	250.00	156.34	156.34	S 89° 17' 30" W
C-7	S 89° 17' 30" W	250.00	156.34	156.34	S 89° 17' 30" W
C-8	S 89° 17' 30" W	250.00	156.34	156.34	S 89° 17' 30" W
C-9	S 89° 17' 30" W	250.00	156.34	156.34	S 89° 17' 30" W
C-10	S 89° 17' 30" W	250.00	156.34	156.34	S 89° 17' 30" W
C-11	S 89° 17' 30" W	250.00	156.34	156.34	S 89° 17' 30" W
C-12	S 89° 17' 30" W	250.00	156.34	156.34	S 89° 17' 30" W
C-13	S 89° 17' 30" W	250.00	156.34	156.34	S 89° 17' 30" W
C-14	S 89° 17' 30" W	250.00	156.34	156.34	S 89° 17' 30" W
C-15	S 89° 17' 30" W	250.00	156.34	156.34	S 89° 17' 30" W
C-16	S 89° 17' 30" W	250.00	156.34	156.34	S 89° 17' 30" W
C-17	S 89° 17' 30" W	250.00	156.34	156.34	S 89° 17' 30" W
C-18	S 89° 17' 30" W	250.00	156.34	156.34	S 89° 17' 30" W
C-19	S 89° 17' 30" W	250.00	156.34	156.34	S 89° 17' 30" W
C-20	S 89° 17' 30" W	250.00	156.34	156.34	S 89° 17' 30" W
C-21	S 89° 17' 30" W	250.00	156.34	156.34	S 89° 17' 30" W
C-22	S 89° 17' 30" W	250.00	156.34	156.34	S 89° 17' 30" W
C-23	S 89° 17' 30" W	250.00	156.34	156.34	S 89° 17' 30" W
C-24	S 89° 17' 30" W	250.00	156.34	156.34	S 89° 17' 30" W
C-25	S 89° 17' 30" W	250.00	156.34	156.34	S 89° 17' 30" W
C-26	S 89° 17' 30" W	250.00	156.34	156.34	S 89° 17' 30" W
C-27	S 89° 17' 30" W	250.00	156.34	156.34	S 89° 17' 30" W
C-28	S 89° 17' 30" W	250.00	156.34	156.34	S 89° 17' 30" W
C-29	S 89° 17' 30" W	250.00	156.34	156.34	S 89° 17' 30" W
C-30	S 89° 17' 30" W	250.00	156.34	156.34	S 89° 17' 30" W
C-31	S 89° 17' 30" W	250.00	156.34	156.34	S 89° 17' 30" W
C-32	S 89° 17' 30" W	250.00	156.34	156.34	S 89° 17' 30" W
C-33	S 89° 17' 30" W	250.00	156.34	156.34	S 89° 17' 30" W
C-34	S 89° 17' 30" W	250.00	156.34	156.34	S 89° 17' 30" W
C-35	S 89° 17' 30" W	250.00	156.34	156.34	S 89° 17' 30" W
C-36	S 89° 17' 30" W	250.00	156.34	156.34	S 89° 17' 30" W
C-37	S 89° 17' 30" W	250.00	156.34	156.34	S 89° 17' 30" W
C-38	S 89° 17' 30" W	250.00	156.34	156.34	S 89° 17' 30" W
C-39	S 89° 17' 30" W	250.00	156.34	156.34	S 89° 17' 30" W
C-40	S 89° 17' 30" W	250.00	156.34	156.34	S 89° 17' 30" W
C-41	S 89° 17' 30" W	250.00	156.34	156.34	S 89° 17' 30" W
C-42	S 89° 17' 30" W	250.00	156.34	156.34	S 89° 17' 30" W
C-43	S 89° 17' 30" W	250.00	156.34	156.34	S 89° 17' 30" W
C-44	S 89° 17' 30" W	250.00	156.34	156.34	S 89° 17' 30" W
C-45	S 89° 17' 30" W	250.00	156.34	156.34	S 89° 17' 30" W
C-46	S 89° 17' 30" W	250.00	156.34	156.34	S 89° 17' 30" W
C-47	S 89° 17' 30" W	250.00	156.34	156.34	S 89° 17' 30" W
C-48	S 89° 17' 30" W	250.00	156.34	156.34	S 89° 17' 30" W
C-49	S 89° 17' 30" W	250.00	156.34	156.34	S 89° 17' 30" W
C-50	S 89° 17' 30" W	250.00	156.34	156.34	S 89° 17' 30" W



- Length of Dotted Line (Auburn Grove Drive) = 2117.2'
- NOTATION LEGEND**
- 5/8" ROW PIN W/OP (1/800) TO BE SET
 - SET AND SINK
 - 1/2" ROW PIN W/OP
 - 1/2" ROW PIN
 - 1/2" ROW PIN (AS NOTED)

NORTH BEARING TO S 112, PAGE #7 OF THE WARREN COUNTY, OHIO RECORDS