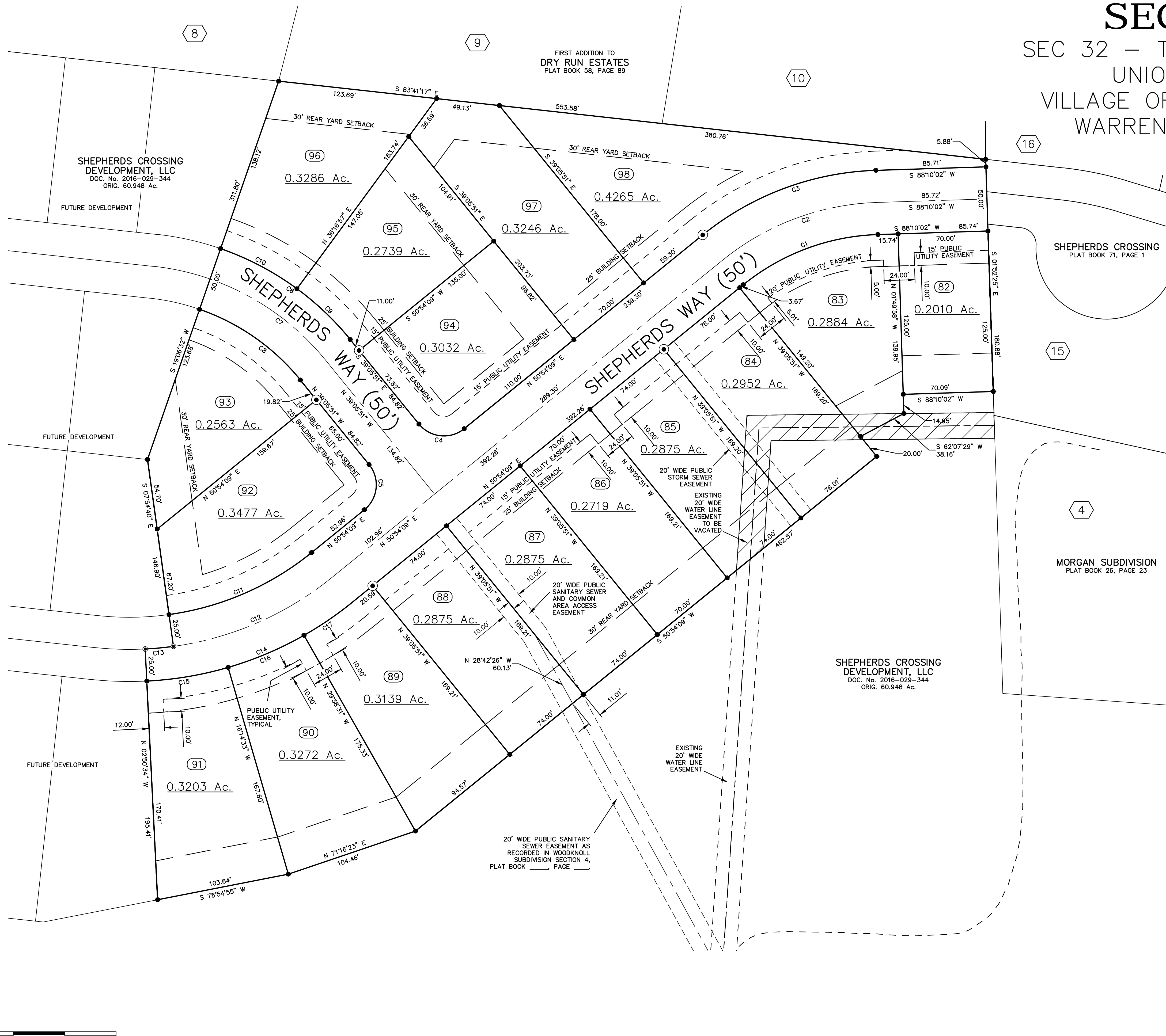
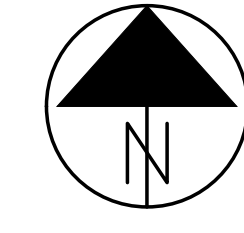


# SUBDIVISION PLAT SHEPHERDS CROSSING SECTION 2

SEC 32 – TOWN 5 – RANGE 3  
UNION TOWNSHIP  
VILLAGE OF SOUTH LEBANON  
WARREN COUNTY, OHIO



BEARINGS ARE BASED UPON THE GRID AZ (Az 133°32'44.2") BETWEEN NATIONAL GEODETIC SURVEY CORS STATION "LEBA" AND McCARTY ASSOCIATES GEODETIC SURVEY MONUMENT "BISHOP (3001)" AND DERIVED FROM GPS OBSERVATIONS TAKEN SEPTEMBER 19, 2012, UTILIZING THE TRIMBLE ODOT CORS VRS (VIRTUAL REFERENCE SYSTEM)



CURVE TABLE					
CURVE No.	LENGTH	RADIUS	DELTA	CHORD LENGTH	CHORD BEARING
C1	113.82	175.00'	37°15'53"	111.82'	S 69°32'06" W
C2	130.08	200.00'	37°15'53"	127.80'	S 69°32'06" W
C3	146.34	225.00'	37°15'53"	143.77'	S 69°32'06" W
C4	39.27	25.00'	90°00'00"	35.36'	S 84°05'51" E
C5	39.27	25.00'	90°00'00"	35.36'	N 5°54'09" E
C6	124.78	225.00'	31°46'31"	123.19'	N 54°59'06" W
C7	110.91	200.00'	31°46'23"	109.49'	N 54°59'02" W
C8	97.04	175.00'	31°46'12"	95.80'	S 54°58'57" E
C9	57.41	225.00'	14°37'12"	57.26'	N 46°24'27" W
C10	67.37	225.00'	17°09'19"	67.12'	N 62°17'42" W
C11	122.47	225.00'	31°11'11"	120.96'	N 66°29'45" E
C12	136.08	250.00'	31°11'11"	134.40'	N 66°29'45" E
C13	22.11	250.00'	5°04'06"	22.11'	N 84°37'23" E
C14	174.01	275.00'	36°15'16"	171.12'	N 69°01'48" E
C15	64.31	275.00'	13°23'58"	64.17'	N 80°27'27" E
C16	64.31	275.00'	13°23'58"	64.17'	N 67°03'28" E
C17	45.38	275.00'	9°27'20"	45.33'	N 55°37'49" E

**NOTES:**  
SIDE YARD SETBACKS SHALL BE 6 FEET MINIMUM/12 FEET TOTAL CONSISTENT WITH THE UNDERLYING ZONING.  
5' DRAINAGE EASEMENTS SHALL BE PROVIDED ALONG ALL SIDE LOT LINES  
10' DRAINAGE EASEMENTS SHALL BE PROVIDED ALONG ALL REAR LOT LINES

**LEGEND**

- 5/8" IRON PIN (SET) WITH PLASTIC CAP STAMPED "McCARTY ASSOCIATES"
- 1" IRON PIN (SET)

**McCARTY ASSOCIATES, LLC**  
ARCHITECTS — ENGINEERS — SURVEYORS  
213 N. HIGH ST., HILLSBORO, OHIO 45133 PH: 937-393-9971 FAX: 937-393-2480  
1515 ST. RT. 28 SUITE E, LOVELAND, OHIO 45140 PH: 513-722-0300 FAX: 513-722-4600  
104 S. MAIN ST., WASHINGTON C.H., OHIO 45160 PH: 740-335-3816 FAX: 740-335-9828  
www.mccartyassociates.com

SUBDIVISION PLAT  
**SHEPHERDS CROSSING SECTION 2**  
SEC 2, TOWN 4, RANGE 2  
UNION TOWNSHIP  
VILLAGE OF SOUTH LEBANON  
WARREN COUNTY, OHIO

L:\Current Projects\2012\12-15-11B Woodhull\Sec 3-4-5\CAD\AutoCAD Project\dwg\12541B Record Plat Section 5 Section 5.dwg, 3/10/2017 10:01:17 AM DWG TO PDF.p3