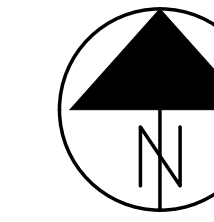


SUBDIVISION PLAT WOODKNOLL SUBDIVISION

SECTION 4

SEC 32 – TOWN 5 – RANGE 3
UNION TOWNSHIP
VILLAGE OF SOUTH LEBANON
WARREN COUNTY, OHIO

BEARINGS ARE BASED UPON THE GRID AZ (Az 133°32'44.2")
BETWEEN NATIONAL GEODETIC SURVEY CORRS STATION "LEBA"
AND McCARTY ASSOCIATES GEODETIC SURVEY MONUMENT
"BISHOP (3001)" AND DERIVED FROM GPS OBSERVATIONS
TAKEN SEPTEMBER 19, 2012, UTILIZING THE TRIMBLE ODOT
CORRS VRS (VIRTUAL REFERENCE SYSTEM)



NOTES:

SIDE YARD SETBACKS SHALL BE 6 FEET
MINIMUM/12 FEET TOTAL CONSISTENT WITH
THE UNDERLYING ZONING.

5' DRAINAGE EASEMENTS SHALL BE
PROVIDED ALONG ALL SIDE LOT LINES

10' DRAINAGE EASEMENTS SHALL BE
PROVIDED ALONG ALL REAR LOT LINES

REVISIONS

THESE DRAWINGS ARE THE PROPERTY OF
McCARTY ASSOCIATES, LLC AND SHALL NOT
BE USED OR REPRODUCED WITHOUT WRITTEN
CONSENT OF McCARTY ASSOCIATES, LLC.
© 2017 McCARTY ASSOCIATES, LLC.
DRAWN: DWS CHECKED: LMP

McCARTY ASSOCIATES, LLC
ARCHITECTS — ENGINEERS — SURVEYORS
213 N. HIGHLAND ST., HILLSBORO, OHIO 45133 PH: 513-393-9971 FAX: 513-393-2480
1515 ST. RT. 28 SUITE E, LOVELAND, OHIO 45140 PH: 513-722-0300 FAX: 513-722-0500
104 S. MAIN ST., WASHINGTON C.H., OHIO 45160 PH: 740-335-3816 FAX: 740-335-5828
www.mccartyassociates.com

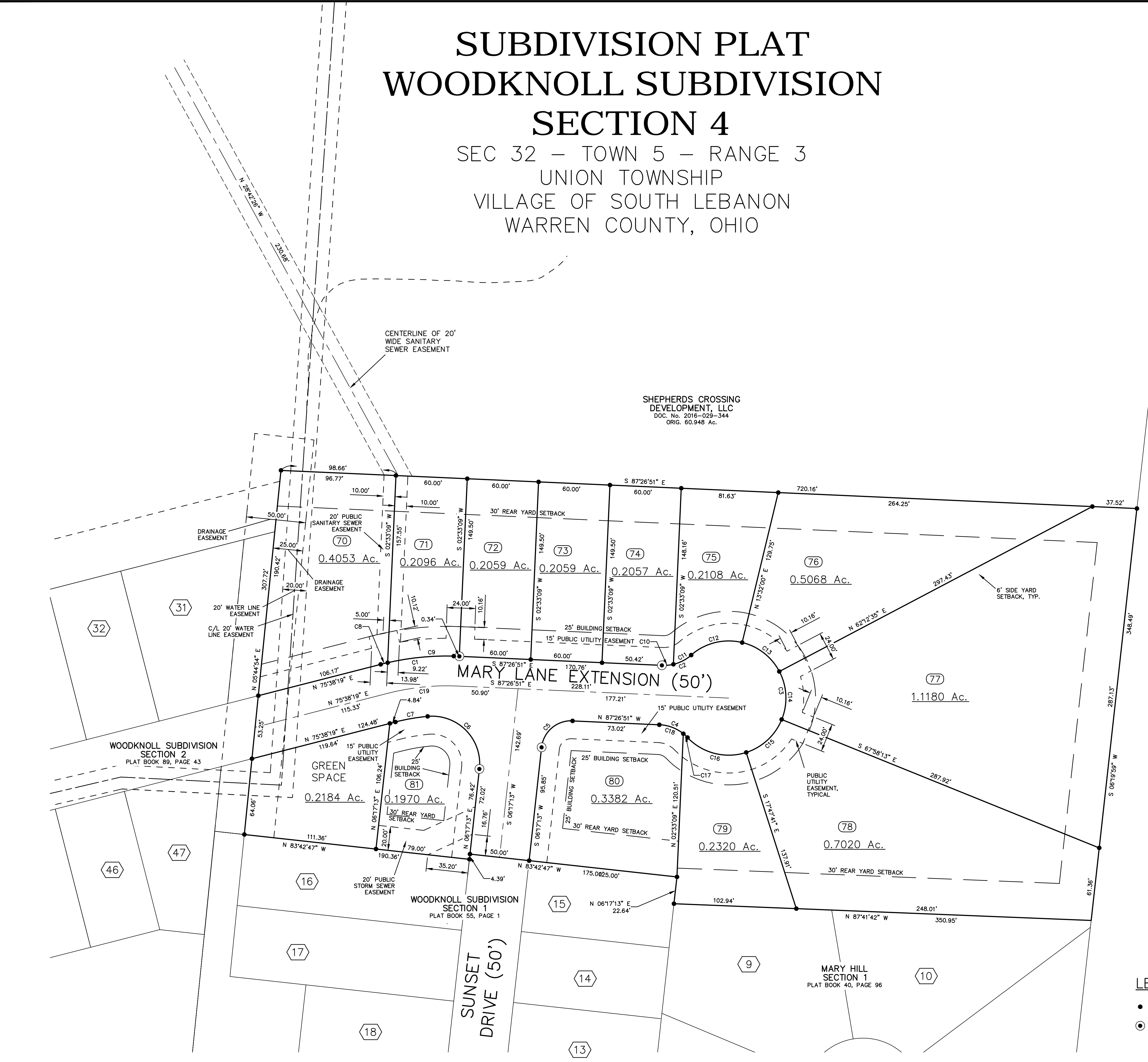
CURVE TABLE				
CURVE NO.	LENGTH	RADIUS	DELTA	CHORD BEARING
C1	66.42	225.00'	16°54'50"	66.18' S 84°05'44" W
C2	26.70	35.00'	43°42'23"	26.06' N 70°41'57" E
C3	224.03	48.00'	267°24'45"	69.40' N 2°33'09" E
C4	26.70	35.00'	43°42'23"	26.06' N 65°35'40" W
C5	37.64	25.00'	86°15'56"	34.18' S 49°25'11" W
C6	70.96	40.00'	101°38'23"	62.01' N 44°31'59" W
C7	27.52	175.00'	9°00'31"	27.49' S 80°08'34" W
C8	6.04	225.00'	1°32'18"	6.04' S 76°24'28" W
C9	60.38	225.00'	15°22'32"	60.20' S 84°51'53" W
C10	9.71	35.00'	15°53'27"	9.68' N 84°36'25" E
C11	16.99	35.00'	27°48'56"	16.83' N 62°45'14" E
C12	45.81	48.00'	54°41'14"	44.10' S 76°11'23" W
C13	40.78	48.00'	48°40'35"	39.56' N 52°07'43" W
C14	41.74	48.00'	49°49'12"	40.43' N 2°52'49" W
C15	42.04	48.00'	50°10'33"	40.70' N 47°07'03" E
C16	53.66	48.00'	64°03'12"	50.91' S 75°46'05" E
C17	4.77	35.00'	7°48'03"	4.76' N 47°38'30" W
C18	21.93	35.00'	35°54'20"	21.58' N 69°29'42" W
C19	59.04	200.00'	16°54'50"	58.83' S 84°05'44" W

UNION TOWNSHIP TRUSTEES
OF WARREN COUNTY
O.R. 140, PAGE 170
20.130 Ac.

LEGEND

- 5/8" IRON PIN (SET) WITH PLASTIC CAP
STAMPED "McCARTY ASSOCIATES"
- 1" IRON PIN (SET)

SHEPHERDS CROSSING
DEVELOPMENT, LLC
DOC. No. 2016-029-344
ORIG. 60.948 Ac.



SUBDIVISION PLAT
WOODKNOLL SUBDIVISION SECTION 4
SEC 2, TOWN 4, RANGE 2
UNION TOWNSHIP
VILLAGE OF SOUTH LEBANON
WARREN COUNTY, OHIO

DRAWING NUMBER SHEET
E12-541B 2

L:\Current Projects\2017\12-541B Woodknoll Sec 3-4\5-CAD\AutoCAD Project\dwg\12541B Record Plat Section 4.dwg, 3/10/2017 10:58:58 AM, DWG To PDF.pc3