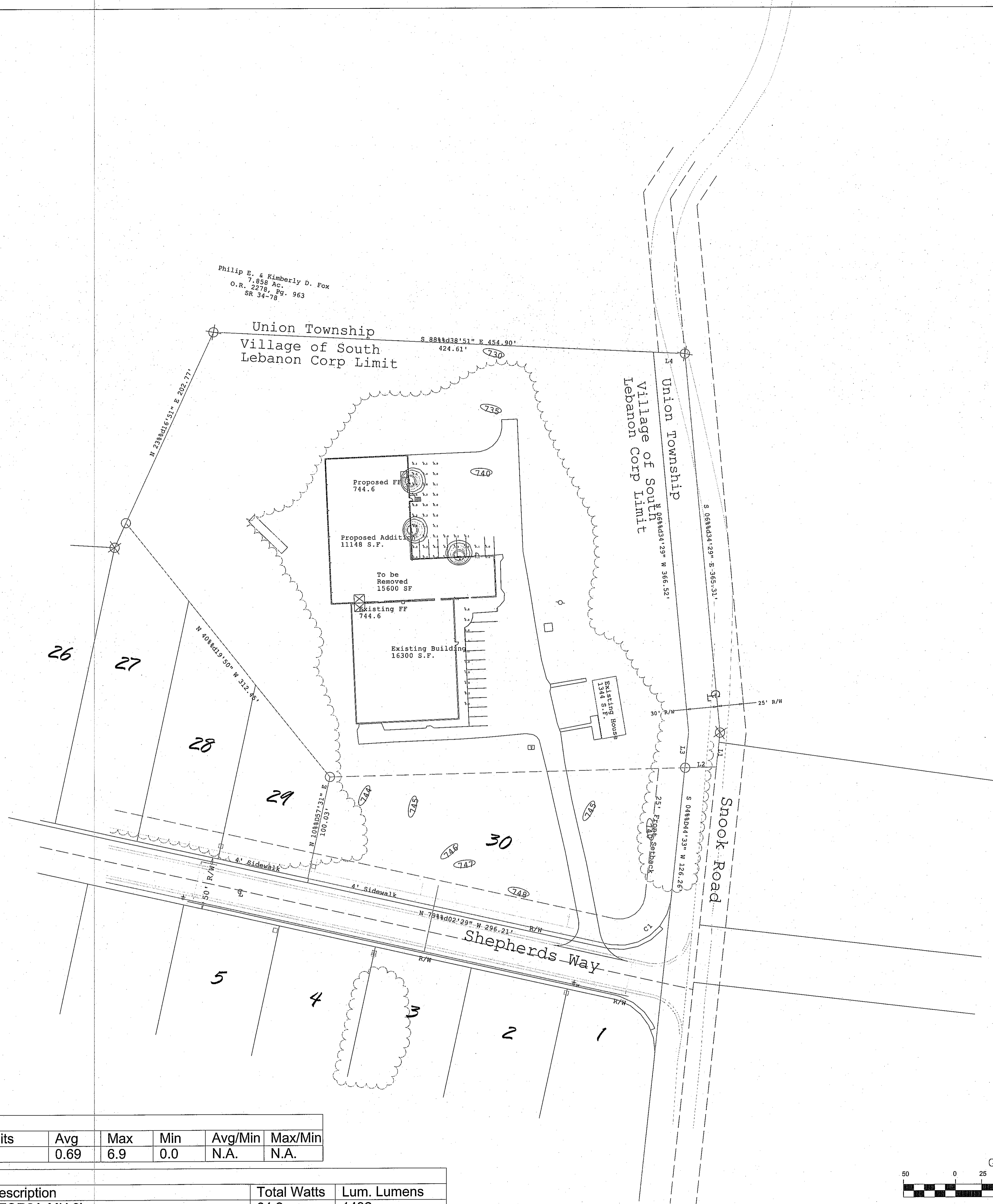


Design Control Document Only - (Not for Construction)
 Recommended location and positioning is based on
 information provided. Illumination levels are calculated
 by laboratory data in accordance with IES approved methods.
 Performance may vary due to job specific variables.
 Calculations do not account for the influence of obstructions
 unless otherwise noted. An engineer and/or architect must
 approve the applicability of the layout for final construction documents.



Philip E. & Kimberly D. Fox
 7,858 Ac.
 O.R. 2278, Pg. 963
 SR 34-70

Union Township
 Village of South
 Lebanon Corp Limit

Proposed FF
 744.6
 Proposed Addition
 11148 S.F.
 To be
 Removed
 15600 SF
 Existing FF
 744.6
 Existing Building
 16300 S.F.

Union Township
 Village of South
 Lebanon Corp Limit

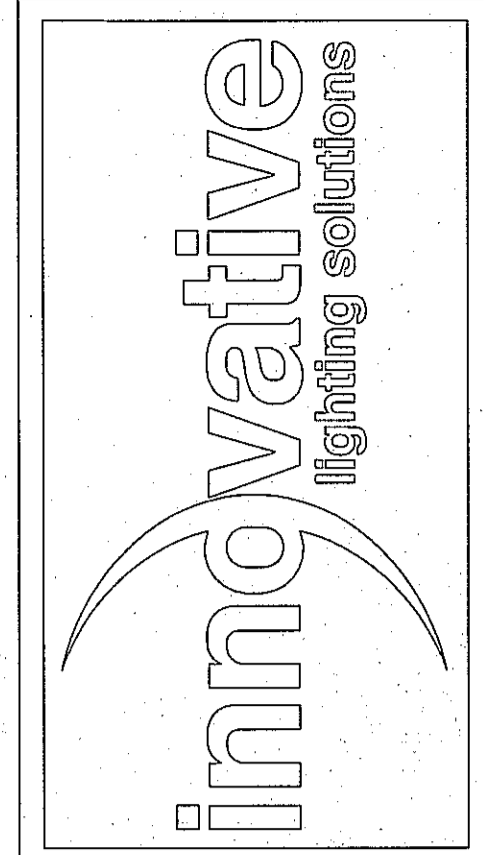
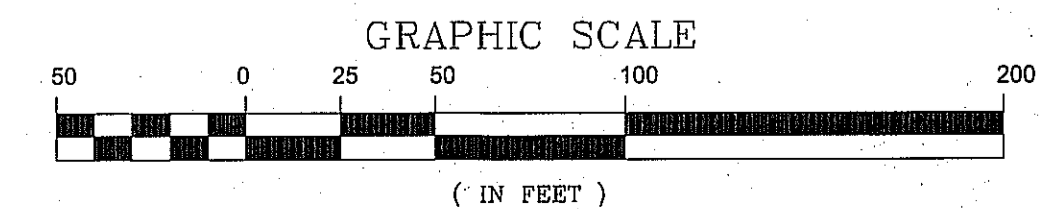
Snook Road

Shepherds Way

GRID AT GRADE
 MOUNTING HEIGHT: 8 FEET

Calculation Summary							
Label	CalcType	Units	Avg	Max	Min	Avg/Min	Max/Min
CalcPts	Illuminance	Fc	0.69	6.9	0.0	N.A.	N.A.

Luminaire Schedule							
Symbol	Qty	Label	Arrangement	LLF	Description	Total Watts	Lum. Lumens
☐	3	A	SINGLE	0.912	XTOR2A-MH 8'	64.2	1432



INNOVATIVE LIGHTING SOLUTIONS
 5585 SPELLMIRE DRIVE
 CINCINNATI, OHIO 45246
 (613) 407-4442
 WWW.ILSOHIO.COM

FELLOWSHIP TRACT

DATE	ISSUE

Total Watts = 64.2
 SCALE
 1" = 50'
 DATE
 3/2/2015
 DRAWN BY
 GOWTHAMI RAO

