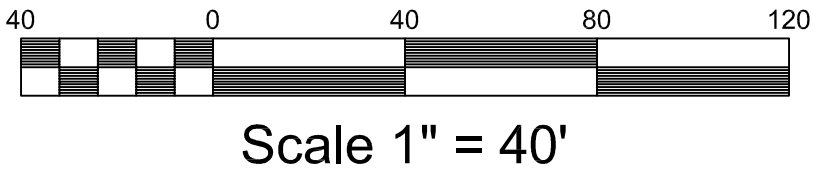
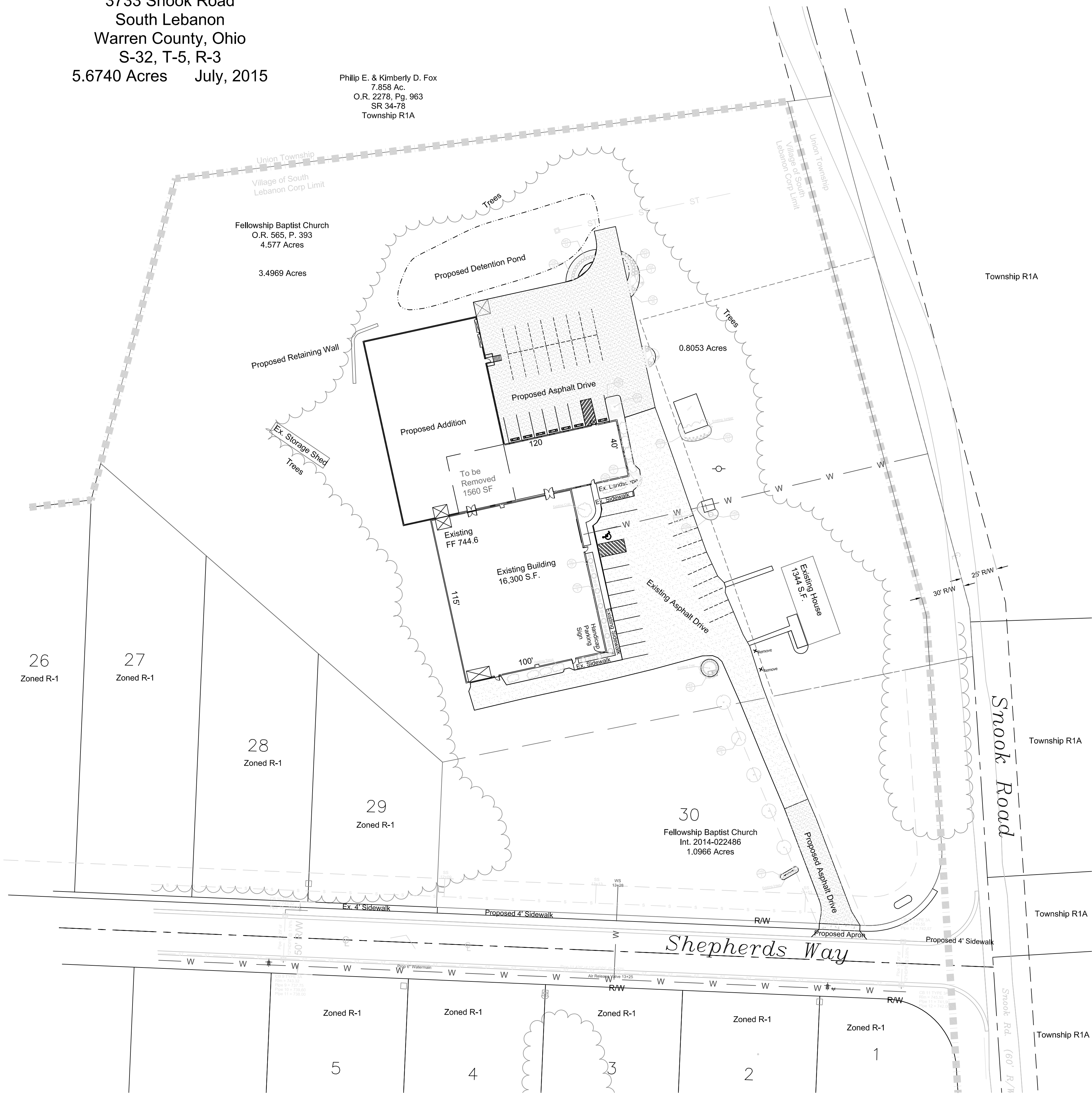




Fellowship Baptist Church
Site Plan

3733 Snook Road
South Lebanon
Warren County, Ohio
S-32, T-5, R-3
5.6740 Acres July, 2015

Philip E. & Kimberly D. Fox
7.658 Ac.
O.R. 2278, Pg. 963
SR 34-78
Township R1A



Material List			
SYM.	DESCRIPTION	SIZE	QTY.
TREES			
ASE	Acer saccharum 'Endowment'	2.0"	2
ALC	Ambelochier lewis 'Cumulus'	2"	1
MVC	Malus 'Coralbunt'	2.0"	7
PERENNIALS			
CMJ	Carex monnoid 'Ice Dance'	1 gal.	71
HFA	Hosta 'Patriot'	1 gal.	32
ISC	Iris sibirica 'Caesar's Brother'	1 gal.	17
NFS	Nepeta faassenii 'Six Hills Giant'	1 gal.	35
MSG	Miscanthus sinensis 'Gracillimus'	3 gal.	5
SHRUBS			
THH	Taxus x media 'Hicksii'	2.5'	11
THW	Taxus x media 'Wardii'	3'	1

The Selection code requires that 12,358 of the lot area be dedicated to intensive landscaping near the building. Given the forestation around the lot, the amount of intensively landscaped area needs to be at least 3267 s.f. Including 8 Trees and 13 Shrubs. Existing, usable plants on the property are:
Shrubs: 3 Taxus and 1 Juniper
Trees: 1 Crab and 1 Maple
New:
Shrubs: 12
Trees: 10
New Landscaping and Beds equal 3,302 s.f.

Date

Fellowship
Site Plan
3733 Snook Road
South Lebanon
Warren County, Ohio
S-32, T-5, R-3
5.6740 Acres July, 2015

DATE: 7/24/2015
HORIZ. SCALE: 1"=40'
VERT. SCALE: NA
DESIGNED BY: RC
PROJECT NO.: 1809
Fellowship Site Plan
Landscape Plan