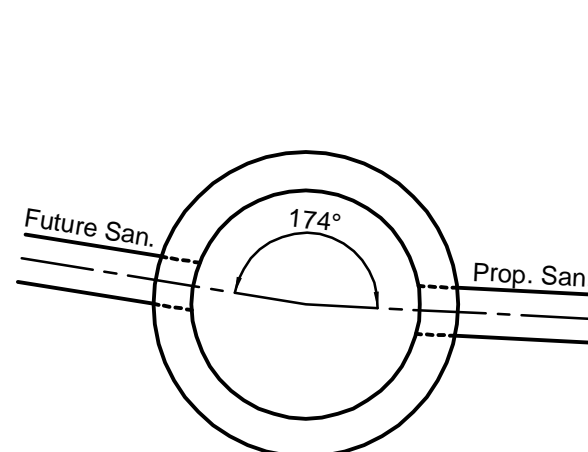


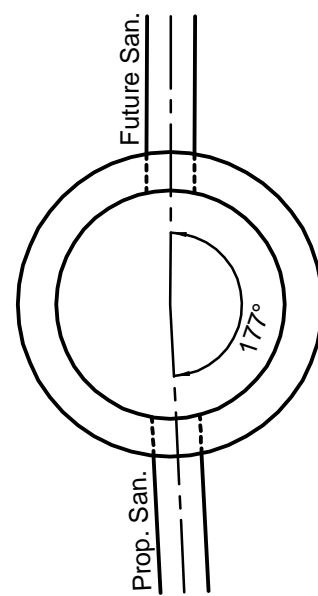


Know what's below.  
Call before you dig.

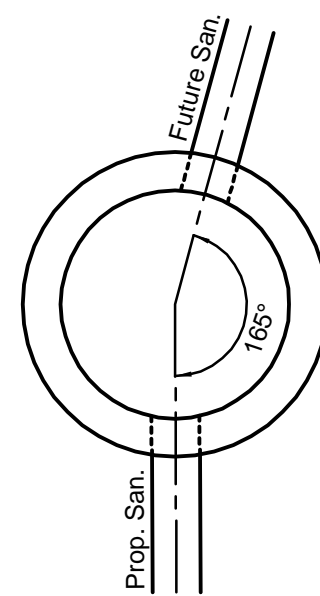
LOCATION OF ALL EXISTING UTILITIES TO BE  
DETERMINED IN THE FIELD PRIOR TO CONSTRUCTION



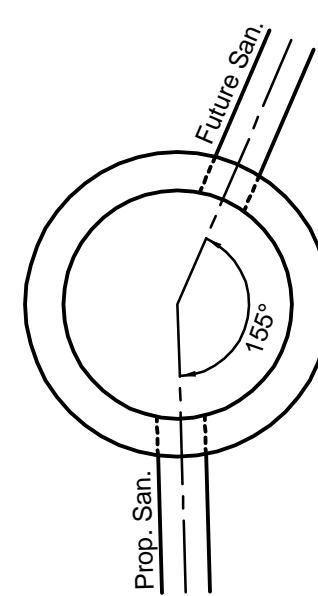
**KNOCKOUT DETAIL**  
**SAN. M.H. "A"**



**KNOCKOUT DETAIL**  
**SAN. M.H. "H"**



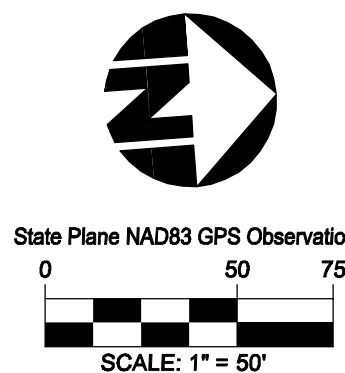
**KNOCKOUT DETAIL**  
**SAN. M.H. "J"**



**KNOCKOUT DETAIL**  
**SAN. M.H. "L"**

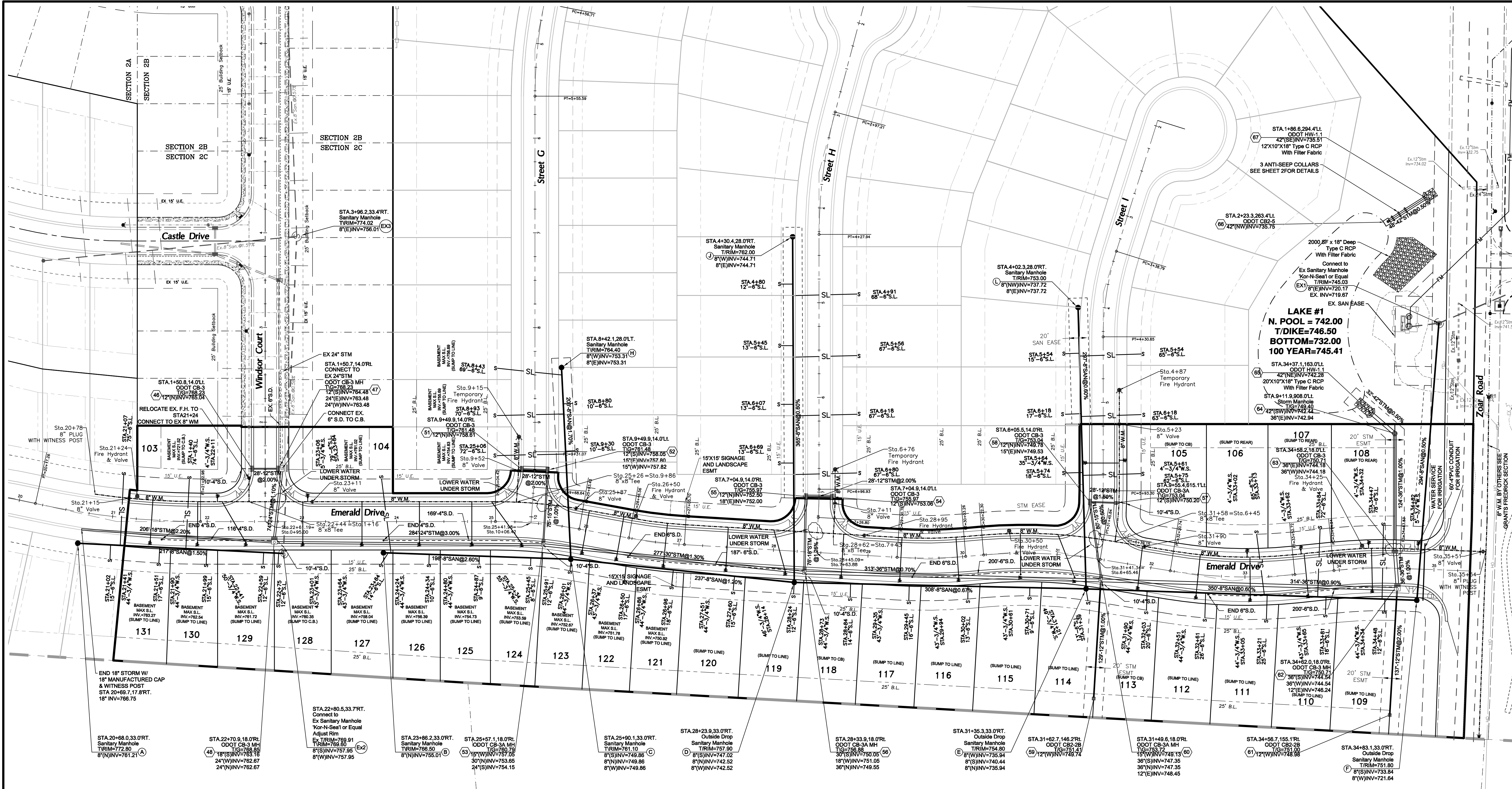
### UTILITY NOTES:

1. LOCATION OF EXISTING UTILITIES TO BE DETERMINED IN THE FIELD PRIOR TO BEGINNING WORK.
2. SANITARY MANHOLES & LATERALS ARE STATIONED FROM THE CENTERLINE OF THE ROAD.
3. EXISTING SANITARY SEWER INVERTS TO BE FIELD VERIFIED PRIOR TO CONSTRUCTION.
4. NO MANHOLES, OR ANY PORTION OF A MANHOLE, SHALL BE LOCATED UNDER A SIDEWALK OR DRIVEWAY. PRIOR TO THE ISSUANCE OF BUILDING PERMITS WITHIN THE SUBDIVISION, ALL MANHOLE LOCATIONS MUST BE CERTIFIED BY SURVEY TO ENSURE THAT THEY ARE PROPERLY LOCATED AND THAT CONFLICTS WITH THE SIDEWALK WILL NOT OCCUR.
5. LOWER WATER SERVICES AS NEEDED TO AVOID CONFLICTS WITH PROPOSED STORM SEWER.
6. THE STATIONS FOR THE 3/4" WATER SERVICES ARE GIVEN TO THE ANGLE VALVE. THE LENGTHS OF THE 3/4" SERVICES DO NOT INCLUDE 2 FEET OF ADDITIONAL COPPER TO ACCOUNT FOR TURN UP TO THE ANGLE VALVE.
7. WATERMAIN SHALL HAVE RESTRAINED JOINTS USED AT LEAST THREE (3) FULL PIPE LENGTHS FROM ANY HORIZONTAL/VERTICAL BEND OR TEMPORARY/PERMANENT DEAD END. RESTRAINED JOINTS SHALL BE AMERICAN LOK-RING TYPE OR APPROVED EQUAL.
8. STORM SEWER MATERIAL SHALL HAVE MANNING'S "N" VALUE EQUAL TO OR LESS THAN 0.012.
9. CLEAN OUTS SHALL BE INSTALLED ON SUMP MAINS AT THE END OF THE LINE AND ON RUNS LONGER THAN 200'.
10. SUMP MAIN MATERIAL SHALL BE PVC SDR-35, HDPE, OR APPROVED EQUAL. ALL SUMP MAINS SHALL BE MAINTAINED BY THE SUBDIVISION'S HOPE.



Drawing: 04M027-003 CD C3D  
Drawn by: G.J.K.  
Checked by:  
Issue Date: 5-09-16  
Sheet:

**4.0**



**WYNSTEAD**  
**SECTION THREE**  
**MILITARY SURVEY NO. 1646**  
**VILLAGE OF SOUTH LEBANON**  
**WARREN COUNTY, OHIO**

UTILITY PLAN & TYPICAL SECTIONS

Item Revision Description

Date Dwn: Chk:

THIS DOCUMENT AND ALL RELATED DETAIL DRAWINGS, SPECIFICATIONS AND ELECTRONIC MEDIA PREPARED OR FURNISHED BY BAYER BECKER (BB), ARE INSTRUMENTS OF BB'S PROFESSIONAL SERVICE AND IS THE EXCLUSIVE PROPERTY OF BB. NO DISCLOSURE, REUSE, REPRODUCTION OR DUPLICATION IN WHOLE OR IN PART MAY BE MADE WITHOUT WRITTEN PERMISSION OF BB. AND IS DONE SO AT USER'S SOLE RISK. COPYRIGHT - ALL RIGHTS RESERVED.