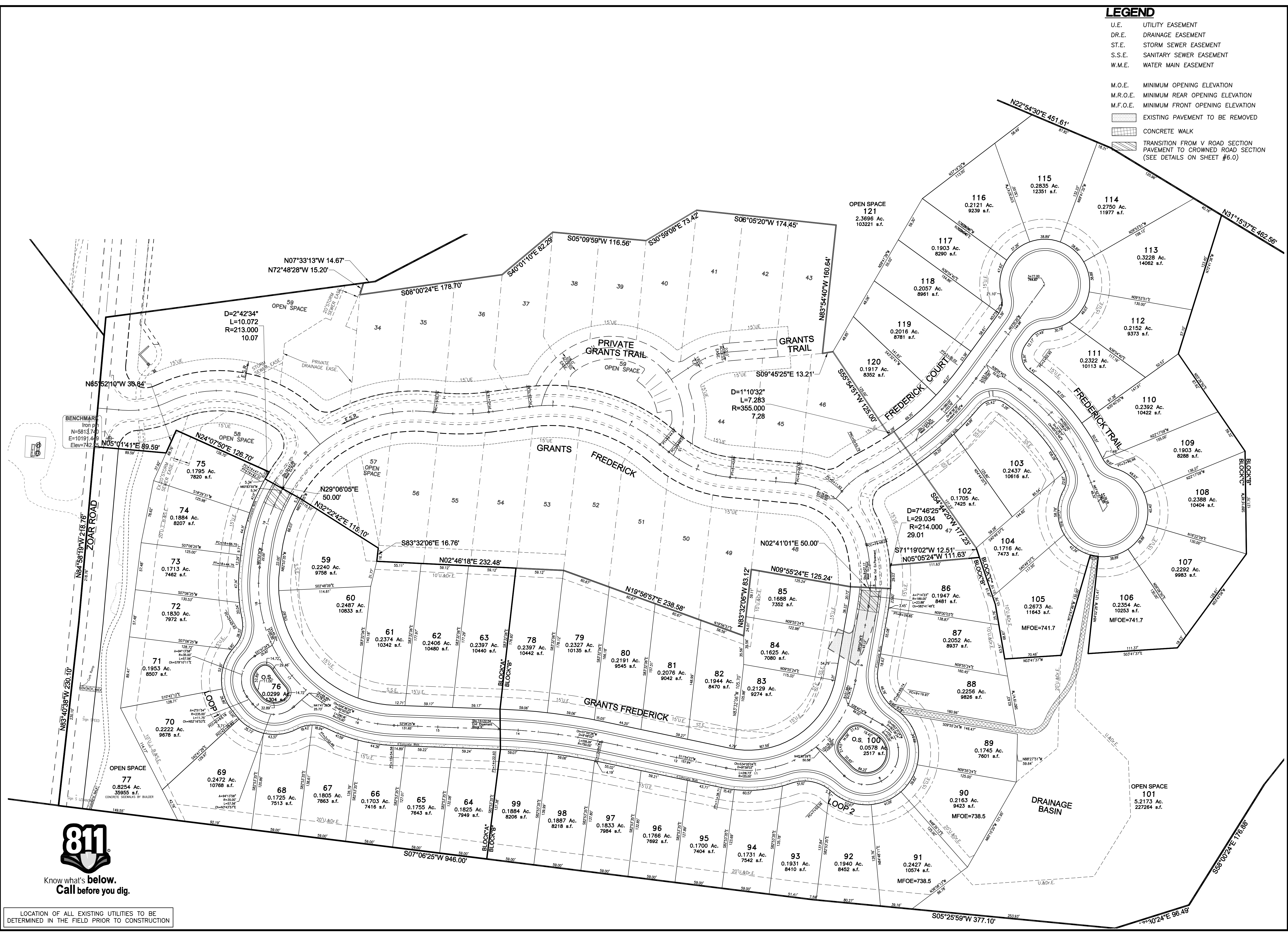
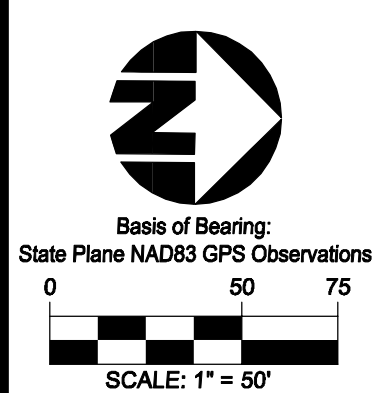


LEGEND

- U.E. UTILITY EASEMENT
- DR.E. DRAINAGE EASEMENT
- ST.E. STORM SEWER EASEMENT
- S.S.E. SANITARY SEWER EASEMENT
- W.M.E. WATER MAIN EASEMENT

- M.O.E. MINIMUM OPENING ELEVATION
- M.R.O.E. MINIMUM REAR OPENING ELEVATION
- M.F.O.E. MINIMUM FRONT OPENING ELEVATION
- EXISTING PAVEMENT TO BE REMOVED
- CONCRETE WALK
- TRANSITION FROM V ROAD SECTION PAVEMENT TO CROWNED ROAD SECTION (SEE DETAILS ON SHEET #6.0)



Plot time: Mar 11, 2015 - 9:59am
 Drawing name: J:\2011\11C009-003 CD C3D.dwg - Layout Tab: C3.0 STAKING PLAN
 Date: _____
 Item: _____
 Revision Description: _____
 Date: _____
 Item: _____

THE VILLAGES AT RIVERS BEND
 GRANTS FREDERICK
 SECTION TWO, BLOCKS A, B & C
 MILITARY SURVEY No. 1648
 VILLAGE OF SOUTH LEBANON,
 WARREN COUNTY, OHIO

STAKING PLAN

**bayer
becker**
 www.bayerbecker.com
 6800 Tyersville Road, Suite A
 Mason, OH 45040 - 513.336.6600

Drawing: 11C009-003 CD C3D
 Drawn by: TAC
 Checked by: GJK
 Issue Date: 03-11-15
 Sheet: _____

C3.0



LOCATION OF ALL EXISTING UTILITIES TO BE DETERMINED IN THE FIELD PRIOR TO CONSTRUCTION